

Ordering

Ordering your products from POLYTANK has always been easy. We hope you have found us extremely responsive, offering you a warm welcome. Now it is the POLYTANK Group, this will only get better. Whatever you need from POLYTANK Group these are your contact points.

Telephone 01772 632850
Fax 01772 679615
Email sales@polytank.co.uk

Or if you are sending your order by post, send it to:

POLYTANK Group Limited
Naze Lane East, Freckleton
Preston, Lancashire. PR4 1UN

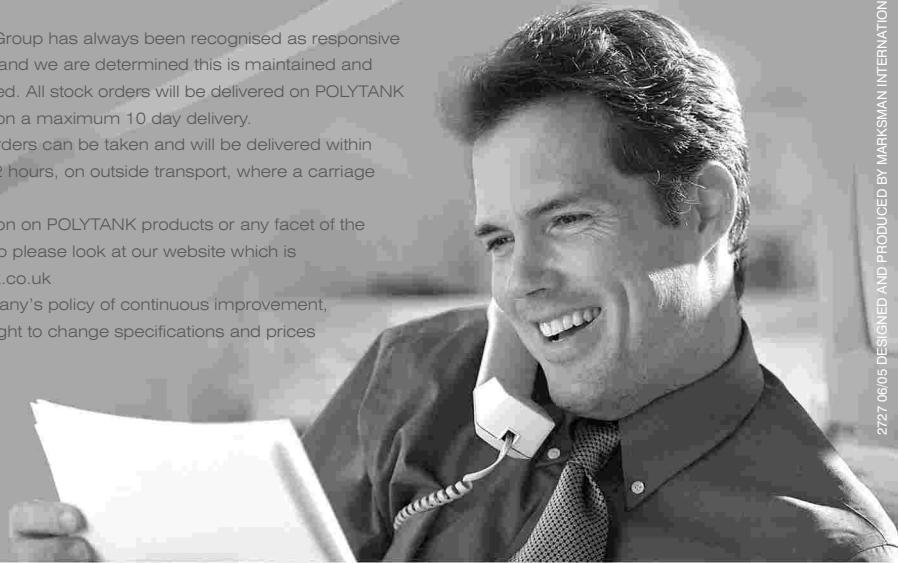
Delivery

The POLYTANK Group has always been recognised as responsive in delivery times and we are determined this is maintained and hopefully improved. All stock orders will be delivered on POLYTANK Group transport on a maximum 10 day delivery.

Single product orders can be taken and will be delivered within approximately 72 hours, on outside transport, where a carriage charge will apply.

Further information on POLYTANK products or any facet of the POLYTANK Group please look at our website which is on www.polytank.co.uk

Due to the company's policy of continuous improvement, we reserve the right to change specifications and prices without notice.



21727 06/05 DESIGNED AND PRODUCED BY MARKSMAN INTERNATIONAL Grimsby and Preston. TEL: +44 (0)1472 240869 www.marksman-int.co.uk



NAZE LANE EAST, FRECKLETON, PRESTON, LANCS. PR4 1UN
Telephone 01772 632850
Facsimile 01772 679615
www.polytank.co.uk
sales@polytank.co.uk

polytank® red

fitting instructions

for all plastic cisterns to meet requirements of BS4213:2004, WRAS, and current water regulations

These instructions are intended as a guide only and all installations are the responsibility of the installer and must be carried out to good working practices and in accordance with Water Supply (Water Fittings) regulations 1999.

 polytank® group
engineering in plastic

WRAS
APPROVED
PRODUCT





1

Remove tank from box and put onto a pair of heavy-duty brackets or across ceiling joists.



2

Connect overflow to compression warning pipe assembly ensuring warning pipe accommodates incoming supply.



3

Connect incoming cold feed into the push fit service valve. This push fit service valve accommodates both 15mm copper or 15mm plastic pipe.



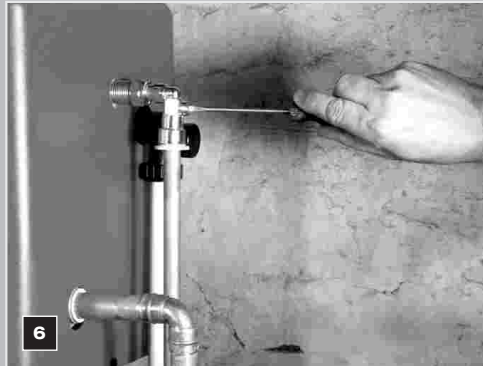
4

Connect outlet into 22mm push fit tank connector. This push fit tank connector accommodates both 22mm copper and 22mm plastic pipe.



5

Remove expansion pipe cap and fit 22mm expansion pipe through rubber grommet.



6

Turn on the cold water supply (stop cock usually under the kitchen sink) and then turn the service valve using a screw driver, to the on position (in line with water flow).



7

As the tank fills, check all round for leaks both with eye and hand. Clip down the lid/s.

The above illustrations show a normal tank installation. Circumstances and access can change the approach but we hope the above extensive procedure, in pictures, gives anyone installing a PolytankRed the ability to deal even with the most difficult circumstances and still do the job right.

WE APOLOGISE, IN ADVANCE, TO ANY PROFESSIONAL PLUMBER OR INSTALLER WHO REGULARLY INSTALLS OUR TANKS. WE APPRECIATE THAT YOU DO NOT NEED THIS LEVEL OF FITTING INSTRUCTION.