

ORDERING

Ordering your products from POLYTANK has always been easy. We hope you have found us extremely responsive, offering you a warm welcome. Now it is the POLYTANK Group, this will only get better. Whatever you need from POLYTANK Group these are your contact points.

Telephone 01772 632850

Fax 01772 679615

Email sales@polytank.co.uk

Or if you are sending your order by post, send it to:

POLYTANK Group Limited

Naze Lane East, Freckleton

Preston, Lancashire. PR4 1UN

DELIVERY

The POLYTANK Group has always been recognised as responsive in delivery times and we are determined this is maintained and hopefully improved. All stock orders will be delivered on POLYTANK Group transport on a maximum 10 day delivery.

Single product orders can be taken and will be delivered within approximately 72 hours, on outside transport, where a carriage charge will apply.

Further information on POLYTANK products or any facet of the POLYTANK Group please look at our website which is on www.polytank.co.uk

Due to the company's policy of continuous improvement, we reserve the right to change specifications and prices without notice.

www.polytank.co.uk



tel: 01772 632850

POLYTANK GROUP Ltd., Naze Lane East, Freckleton, Preston, Lancashire PR4 1UN



market leaders in domestic cold water storage tanks

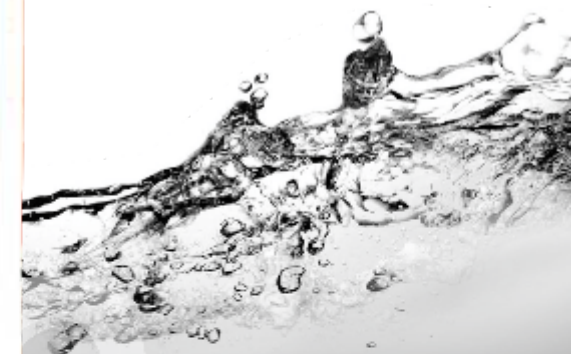
PolyRed

fitting instructions

for all plastic cisterns to meet requirements of BS4213:2004, WRAS and current water regulations



These instructions are intended as a guide only and all installations are the responsibility of the installer and must be carried out to good working practices and in accordance with Water Supply (Water Fittings) regulations 1999.



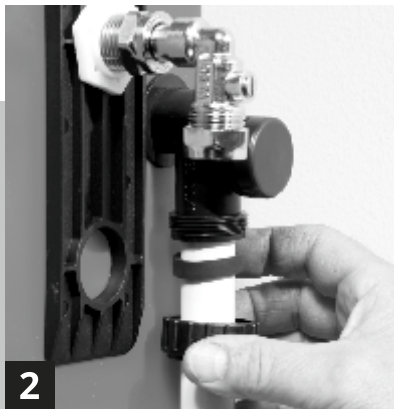
Polygroup is the trading name of Polytank Group Limited

POLYTANK GROUP Ltd., Naze Lane East, Freckleton, Preston, Lancashire PR4 1UN
tel: 01772 632850 • fax: 01772 679615 • web: www.polytank.co.uk • e-mail: sales@polytank.co.uk



1

Remove tank from box and put on a pair of heavy duty brackets. A solid wooden base can be used if desired.



2

Connect overflow to Compression Warning Pipe assembly ensuring warning pipe accommodates incoming supply.



3

Connect incoming Cold Feed into the Compression Angled Service Valve. This angled Service Valve accommodates 15mm Pipe.



4

Carefully tighten up the Compression Fitting while securely holding the Angled Service Valve.



5

Ensure the other end of the Angled Service Valve is Nipped up securely onto the Ballvalve Thread.



6

Connect outlet into Push Fit Tank Connector. This Tank Connector accommodates 15mm Pipe.



7

Remove Expansion Pipe Nut and Washer and fit 22mm Expansion Pipe through the Expansion Pipe Sleeve. Replace Nut and Washer and Tighten.



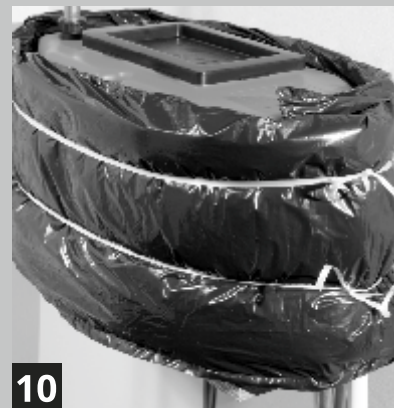
8

Turn on the Cold water Supply (stop cock usually under the sink) Then turn the Service Valve using a screwdriver to the on position (in line with the water flow). As the tank fills check all round for leaks with Hand and Eye. Clip Down the Lid.



9

Fit the Insulation around the Polytank.



10

Secure the Insulation with Ties provided.

The above illustrations show a normal tank installation. Circumstances and access can change the approach but we hope the above extensive procedure, in pictures, gives anyone installing a Polytank Red the ability to deal even with the most difficult circumstances and still do the job right.

WE APOLOGISE, IN ADVANCE, TO ANY PROFESSIONAL PLUMBER OR INSTALLER WHO REGULARLY INSTALLS OUR TANKS. WE APPRECIATE THAT YOU DO NOT NEED THIS LEVEL OF FITTING INSTRUCTION.